

## Geometry – G.CO.3 – Group Practice - Reflections

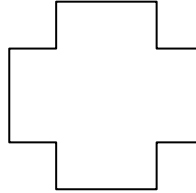
---

Each of the following polygons can be **reflected to carry the image onto itself**. For each of the following polygons, use your resources (Sketchpad, Geogebra, patty paper, compass, straightedge) to identify at least one such line of reflection.

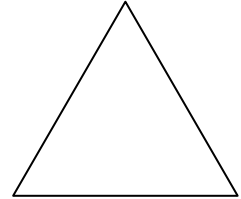
1.



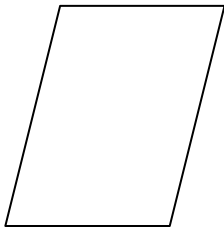
2.



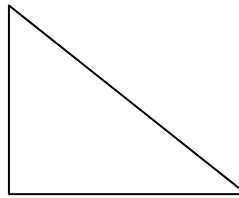
3.



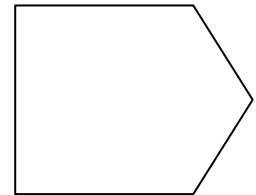
4.



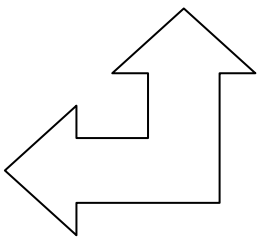
5.



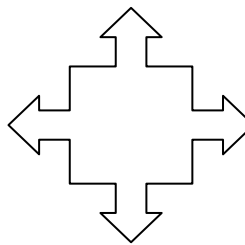
6.



7.



8.



9.

